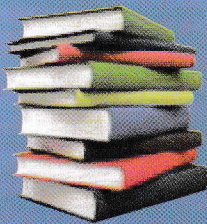


# GEOGRAPHY

## Stage II

### Analysing Human Population and Settlements



Institute of Adult Education  
Alternative Secondary Education Pathway

# **GEOGRAPHY**

## **STAGE II**

### **Analysing Human Population and Settlements**

Institute of Adult Education  
Alternantive Secondary Education Pathway

## Copyright

All rights are reserved. No part of this publication may be reproduced in any form or any means, in full or in part, except for short extracts in fair dealings, for research or private study, critical scholarly review or discourse with an acknowledgement, without the written permission of the Institute of Adult Education.

© Institute of Adult Education, 2023

**ISBN 978-9976-88-158-5**

P. O. Box 20679,  
Dar es Salaam,  
Bibi Titi Mohamed Street,  
Tanzania

Tel: +255 22 2150838  
Email: [info@iae.ac.tz](mailto:info@iae.ac.tz)  
Website: [www.iae.ac.tz](http://www.iae.ac.tz)

## Acknowledgement

This module is a product of the Institute of Adult Education (IAE) produced in 2021 for Alternative Education Pathway (AEP), and reflecting the current syllabi of 2010 secondary education in Tanzania, as recommended by Tanzania Institute of Education.

This module is indeed an outcome of concerted efforts of various experts from within and outside the IAE. The IAE profoundly acknowledges the valuable inputs of all stakeholders for devoting their time and resources to ensure effective preparation of this module.

IAE extends sincere gratitude to individuals who contributed in one way or another in accomplishing this task. The following staff from within and outside the IAE deserve special appreciation and recognition for their insightful contribution in writing and reviewing this module:

Baraka S. Kionywaki	Institute of Adult Education (Coordinator)
Amina M. Abubakar	Institute of Adult Education (Assistant Coordinator)
Ms. Grace Chogo	Tubuyu Secondary School (Reviewer)
Mr. Baraka Kirufi	Ukwega Secondary School (Reviewer)
Mr. Eric E. Samba	Institute of Adult Education (Editor)
Ms. Janeth Mzava	Institute of Adult Education (Secretary)



.....  
Dr. Michael W. Ng'umbi

**Director**

**Institute of Adult Education**

# Contents

<b>About this module</b>	<b>1</b>
How this module is structured.....	1
The module overview.....	1
The Module Content.....	1
Resources.....	1
Your Comments.....	2
<b>Module Overview</b>	<b>3</b>
Welcome to this Module.....	3
General Competence.....	3
Study Skills.....	3
Need Help?.....	4
Module Assessment.....	4
<b>Getting around this Module</b>	<b>5</b>
Margin icons.....	5
<b>Unit 1</b>	<b>6</b>
Analyzing Human Population.....	6
Introduction.....	6
Learning Outcomes.....	6
Concept of Population.....	6
Activity 2.....	10
Referring to your place what do you think are the reasons for your settlements where you are?.....	10
Population Data and Policy.....	17
Analyzing Population Policies.....	22
Unit Reflection.....	27
Unit Assignment.....	27
<b>Unit 2</b>	<b>28</b>
Classifying Settlements.....	28
Introduction.....	28
Learning Outcomes.....	28
Concept and Types of Settlements.....	28
Socio-Economic Problems Associated with Urban Growth.....	38
Unit Reflection.....	49
Unit Assignment.....	49
<b>References</b>	<b>50</b>



## About this Module

Geography Stage II Analyzing Human Population and Settlements has been produced by Institute of Adult Education. All modules produced by Institute of Adult Education are structured in the same way, as outlined below.

---

## How this Module is Structured

### The module overview

The module overview gives you a general introduction to the module. Information contained in the module overview will help you determine:

- if the module is suitable for you,
- what you already know,
- what you can expect from the module, and
- how much time you will need to invest to complete the module.

The overview also provides guidance on:

- study skills,
- where to get help,
- module assignments and assessments,
- activity icons, and
- units.

We strongly recommend that you read the overview *carefully* before starting your study.

### The Module Content

The module is broken down into units. Each unit comprises:

- An introduction to the unit content,
- Unit outcomes,
- Core content of the unit with a variety of learning activities,
- A unit reflection,
- Assignments and/or assessments, as applicable, and
- Answers to Assignment and/or assessment, as applicable.

### Resources

For those interested in learning more on this subject, we provide you with a list of additional resources at the end of this module; the resources are books, articles or web sites.



---

## Your Comments

After completing this Module we would appreciate it if you would take a few moments to give us your feedback on any aspect of this module. Your feedback can include comments on:

- Module content and structure,
- Module reading materials and resources,
- Module assignments,
- Module assessments, and
- Module support (assigned tutors, technical help, etc.)

Your constructive feedback will help us to improve and enhance this module.



---

## Module Overview

---

### Welcome to this Module

Dear learner, have you visited some places such as bank and bureau de change? What did you observe? Have you seen some information written on the notes board? What kind of information placed on the board? Again, have you ever seen things arranged in orders that follow some pattern or rules? Visit places like library, church, classroom, planned streets and so on observe how things are arranged.

This module consists of four units which are Analyzing Human Population Distribution and change, Assessing Population Change and Associated Effects, Examining Population Data and Policy, Discussing Settlements Issues. Hope you will enjoy studying this module.

---

### General Competence



Upon completion of this module, you are expected to attain the following competence:

- to analyze human population and settlement.

---

### Study Skills



As an adult learner' your approach to learning will be different from the approach you used during your school days. Now you will choose what you want to study, you will have professional and/or personal motivation for doing so and you will most likely be fitting your study activities around other professional or domestic **responsibilities**.

Essentially you will be taking control of your learning environment. As a consequence, you will need to consider performance issues related to time management, goal setting, stress management, etc. Perhaps you will also need to acquaint yourself in areas such as essay planning, coping with exams and using the web as a learning resource.

Your most significant considerations will be *time* and *space* i.e. the time you dedicate to your learning and the environment in which you engage in that learning.



We recommend that you take time now—before starting your self-study—to familiarize yourself with these issues. There are a number of excellent resources on the web. A few suggested links are:

- <http://www.how-to-study.com/>

The “How to study” web site is dedicated to study skills resources. You will find links to study preparation (a list of nine essentials for a good study place), taking notes, strategies for reading text books, using reference sources, test anxiety.

- <http://www.ucc.vt.edu/stdysk/stdyhlp.html>

This is the website of the Virginia Tech, Division of Student Affairs. You will find links to time scheduling (including a “where does time go?” link), a study skill checklist, basic concentration techniques, control of the study environment, note taking, how to read essays for analysis, memory skills (“remembering”).

- <http://www.howtostudy.org/resources.php>

Another “How to study” website with useful links to time management, efficient reading, questioning/listening/observing skills, getting the most out of doing (“hands-on” learning), memory building, tips for staying motivated, developing a learning plan.

The above links are our suggestions to start you on your way. At the time of writing the web links were active. If you want to look for, more go to [www.google.com](http://www.google.com) and type “self-study basics”, “self-study tips”, “self-study skills” or similar.

---

## Need Help?



Dear learner, in the course of your study, you may need help in various issues such as the location and how to get support from resource centres, clarification of various issues pertaining to your study materials (modules) and so on. If this happens, you are advised to ask for the help from your Centre coordinator or facilitator. You can also visit the website of the Institute of Adult Education which is [www.iae.ac.tz](http://www.iae.ac.tz), and, you can call no +255 22 2150836 and ask for help.

---

## Module Assessment



After each unit, you will be required to attempt one unit assignment. These are not meant for submission rather for reflection on what you have learned in the whole module. You will also be given tests and assignments for submission as you will be guided by your module facilitator. You will also sit for mock examinations to accomplish your continuous assessment.



## Getting around this Module

### Margin icons

While working through this module you will notice the frequent use of margin icons. These icons serve to “signpost” a particular piece of text, a new task or change in activity. They have been included to help you to find your way around this module.

A complete icon set is shown below. We suggest that you familiarize yourself with the icons and their meaning before starting your study.

			
Activity	Assessment	Assignment	Case study
			
Discussion	Group activity	Help	Note it!
			
Outcomes	Reading	Reflection	Study skills
			
Summary	Terminology	Time	Tip
			
Computer-Based Learning	Audio	Video	Feedback
			
Objectives	Basic Competence	Answers to Assessments	



## Unit 1

### Analyzing Human Population

#### Introduction

Dear learner, welcome to unit one of this module which is about population. This unit is intended to expose you to population distribution and change. It is my hope that you will enjoy it.

#### Learning Outcomes

Upon completion of this unit, you will be able to:



- describe the characteristics of human population,
- explain the factors for population distribution,
- describe factors for population change,
- analyse the effects of population change on an individual and nation,
- explain the sources and uses of population data and
- describe the meaning and importance of population policy.

#### Concept of Population

Dear learner, **Population** is a number of people, animals and plants (living things) occupying a certain area. **Human Population** is a group of people occupying a certain geographical area. **The population size** of any geographical area refers to the total number of its inhabitants at a given time which is obtained through census.



#### Activity 1

Dear learner, search for and share with a friend the Tanzania's population according to the 2012 census. What can you say about the growth rate?

Dear learner, after discussing the concept of population and human population, are you clear about them? Hope they have quite given you some light. The second part is now going to be about the characteristics of human population.

#### Characteristics of Human Population

Dear learner, Population characteristics are explained through the analysis of the age, sex, births, deaths and marital status. Hence, the growth of a population depends on the number of people born in a period. It also depends on the number of migrants and immigrants. The main population characteristics are **size, age structure, sex and occupation.**



### i) Size

You have already learnt about what is meant by the population of any geographical area. Well, briefly let us start a bit back. In 1948 the population of Tanzania was about 4 million but in 1978 the total population was about 17 million. The population size of Tanzania was 44.9 million (2012) larger than that of Rwanda but less than that of Nigeria 167,229,000 million in the same year. Therefore population size is the actual number of individuals in a population per unit area or volume. Consider Table 1.1.

**Table 1.1: Population size and density of selected African countries**

Country	Total population (million)	Year
Tanzania	44,928,923	2012
Ethiopia	167,229,000	2012
Rwanda	10,515,973	2012

**Source:** Demographic Year Book United Nations, New York (2012).

Dear learner, Tanzania having one of the highest rates of population growth in Africa has a rapid growth estimated at 2.7 percent annually. With an urban growth rate of over 5 percent, Tanzania's population according to 2012 population census is 44.9 million of whom 49 percent are males and 51 females.

You can see that such an increase shows that Tanzania will soon fail to feed its people unless necessary steps are taken to contain the situation. We shall discuss this in the later part concerning the Tanzania National Population policy.

### ii) Sex Ratio

Sex ratio is the number of males per 100 females in the population. Ratios of less than 90 or more than 110 are considered to be unbalanced. The African population has sex ratio of 103 at birth, which is below the world average of 106. There are significant variations in sex composition between countries. For example, few countries such as Uganda, Equatorial Guinea, Gambia and Kenya have ratios of over 100 for all ages combined. High sex ratio for Equatorial Guinea and Gambia appears to be related to the presence of a large number of immigrants. Low sex ratio may be attributed to high mortality rates for males at young ages. However, there are three broad patterns of differential sex ratio that can be distinguished in Africa.

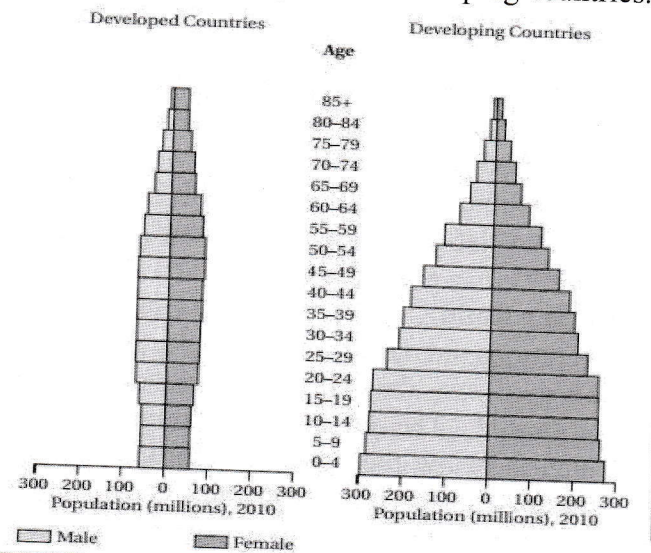


Countries with low sex ratio of 95:100 include Guinea, Togo, Mozambique, Swaziland and Tanzania. Generally, there are more females than males in Tanzania. This trend is reflected in individual age groups especially at the younger age. In 1978 census, the sex ratio at national level was 96 males for 100 females.

### iii) Age structure

The age structure of a population is the proportion of people within various age groups usually of the range 0 – 4, 5 – 9, 10 – 14, 15 – 19, 20 – 24, 25 – 29, 30 – 34, 35 – 39, 40 – 44, 45 – 49, 50 – 54, 55 – 59, 60 – 64, 65 – 69, 70 – 74, 75 – 79, 80 – 84 and 85 +. It also refers to the number of complete years lived or age. On the other hand, age proportion of males and female in each age group is called the age and sex structure of population characteristics such as mortality, migration and labor force. The age structure of the African population is different from those of the European and Asian populations. Africa has a high proportion of children who are under the age of 15. The proportion ranges from 43 to 46 percent while in developed countries it varies between 25 and 30 percent.

The individual age groups in a population can easily be depicted in a population pyramid as shown in figure 2, which compares the rich or developed, and the poor or developing countries.



**Figure 1.1: Population pyramids comparing age groups in developed and developing countries**

The pyramid shows that in developing countries where fertility is high, the base composed of children less than 15 years is very broad. The population pyramid begins to narrow at the economically active



age (15-16 years) to the old age at the apex (54+years). The two pyramids show the proportion of the total population by age group and by gender. Rich countries are shown to have a greater proportion of their population in most productive age group.

Poor countries have greater potential for rapid population growth because a large part of the population is young. Thus, economic growth in poor countries must be at high levels just to keep up with population growth.

You should now take a break before proceeding to further text. After taking a short break you will still remember what you have been reading some few minutes ago.

#### iv) **Occupation structure**

The productive population consists of people above the age of 15 but below 65. This potential working forces for most 'African countries are below from labour force standards.

In Africa, children aged 9-15 make considerable contribution to farm labour. The working force for most African countries is below 50 percent of the total population with the exception of the Republic of Benin, Mauritania, Burkina Faso, Zambia and Gabon.

In most developed countries the working force is over 60 percent. About 80 percent of active population in Africa is engaged in primary activities such as agriculture, hunting, fishing and collecting forest products.

In Tanzania, 44 percent of the 34.5 million people are under the age of 15; this shows that Tanzania has a relatively youth population. There is also another 4 percent of the population who are over the age of 65 leaving 52 percent in the working age group of 15-64.

#### **Sources of population data**

In studying population, you should note that population data are obtained through

- Census,
- Vital registration and
- Sample survey.

The data obtained are useful in different ways;

- i) The information obtained during the National Census is used by the government for planning public services like; schools, hospitals, markets, etc.



- ii) Enable to know the age and sex in a country, for example in Tanzania the number of females is higher than of male.
- iii) Enables the government to combat mortality rate which may lead to loss of man power if not well managed.
- iv) Enables to know the number of manpower skilled and unskilled people.

### Population Distribution

Population distribution is the way in which people are spread out across the earth surface. The distribution of the population is uneven and changes over period of time. There are several reasons which make people be where they are.



### Activity 2

Referring to your place what do you think are the reasons for your settlements where you are?

### Factors for Population Distribution

Dear learner, there is combination of factors which have influenced the distribution of population. These are physical, historical, political and economical factors.

#### a) Physical Factors

Physical factors include climate, relief, and diseases. These factors govern human population distribution in different ways.

- i) **Climate:** It has a powerful influence on population distribution and density in a sense that arid regions are sparsely populated because they offer limited potential for agriculture while fertile soil with enough rainfall allow for more continuous cultivation and therefore encourage high population density. Good examples are the Kilimanjaro and Tukuyu areas in Tanzania. These are densely populated because they get a lot of rainfall, which ensures them continuous production of food for the population. Please read again this part as it consists of many factors joined together as physical factors. This will enable you to better understand the exact role of each factor in the physical group.
- ii) **Relief:** The influence of relief on population distribution and density is highly localized. Where slopes are steep and rugged for example the upper slopes of high mountains, agriculture and settlements are rare. Some forests have also been associated with low population densities because of the thickness of vegetation and therefore the difficulties of clearing.



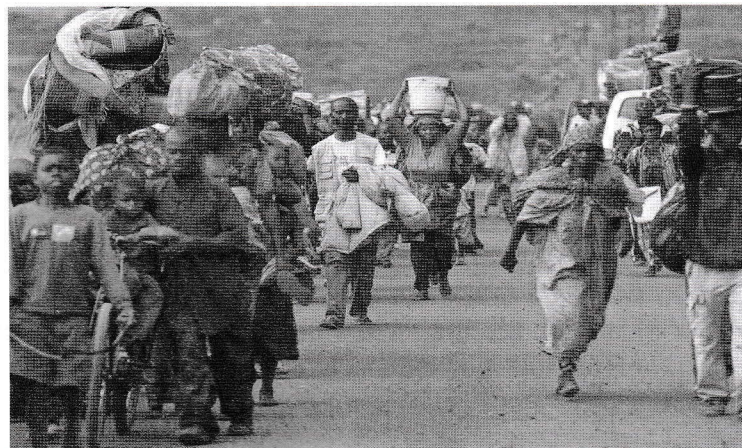
iii) **Diseases:** This is another physical factor that has an influence on the human population distribution. Diseases such as malaria which attack people and trypanosomiasis which attack both people and livestock have caused low densities of population in some areas of central Tanzania. Tsetse flies, which spread trypanosomiasis to cattle and people, have restricted population severely in Western and Southern Tanzania. Tanzania is said to have 60 percent of the affected areas by this disease. Some of these areas have less than two people per square kilometer.

**b) Historical Factors**

Another factor that governs the distribution of population is historical factors. The population of Africa including Tanzania suffered considerably during the pre-colonial period from the slave trade and inter-tribal wars. About 15 million people were taken away as slaves. Hence this situation of insecurity led to concentration of population in certain areas, thus affecting the population distribution.

**c) Political Factors**

A large population of Africa is displaced due to political conflicts and other governmental policies. This movement is involuntary and is dominated by refugees who are characterized by human suffering. We are lucky in Tanzania that our country is generally peaceful. But East Africa including Tanzania has been getting more refugees. These come from Burundi, Rwanda, Republic of Congo (former Zaire) and Mozambique. These refugees have caused a big destruction of the environment in places such as Kagera and Kigoma regions in Tanzania, especially depletion of vegetation.



*Figure 1.2: Impact of political conflicts in population distribution*



#### d) Economic Factors

Some population distributions have been caused by economic factors. People get concentrated in specific areas simply because they get some economic gains, money for example, out of the activities that are carried in those particular places.

*Think of the place where you undertake your daily activities. It is obvious that there are other business men and woman who also undertake business. What are their original homes? What has attracted them to be where they are?*

One of the economic factors that have necessitated population distribution is mining. Mineral deposits have encouraged modern mining and affected population concentration. The occurrences of minerals even in dry areas attract a huge population. For example, places like Mwadui, Kilembe, Nyarugusu, Makongolosi in Chunya, Mererani in Manyara, Matombo in Morogoro, Mahenge and some parts in Ludewa and Tunduru districts in Tanzania have attracted huge numbers of population. The presence of employment in these areas attracts many people. These are some of the factors that govern human population distribution.



**Figure 1.3: Mineral resource as one the factor determining population distribution**



#### Activity 3

Can you tell the factors that have influenced your area, district or region to become densely or less densely populated?



## Population Change and Associated Effects

Dear learner welcome to this part. The previous part has been on the factors that contribute to human population distribution. You also read about the characteristics of population and in particular the characteristics of Tanzania population. In this unit you are going to study about population change that is what actually makes the population of any country either to increase or decrease.

### Population Change

Human population is central to many environmental problems and their solutions; it is important that we understand how population increases and decreases. These biological reasons that affect the size of all animals and plant population also apply to human population.

### Causes Population to Change

Before we go into what are the causes for this change you should understand that populations or organisms, whether they are animals, birds or humans do change over time. On a global scale this change is due to three factors which are:

- v) The number of births,
- vi) Deaths and
- vii) Migration.

The birth, death rates and migration must also be considered when changes in population on local scale are examined. There are **two** types of migration:

- i) **Immigration** by which individuals enter a population and this increases the size of the population,
- ii) **Emigration** by which individuals leave a population and thus decrease its size:

The growth rate therefore is equal to the value of birth rate minus death rate, plus the value of immigration minus emigration. In simple mathematical equation this can stand as:

$$r = (b-d) + (i-e)$$

Where r = growth rate

b = birth rate

d = death rate

i = immigration

e = emigration

How does each factor play part in the population change?



### a) Fertility (Birth Rate)

Fertility is the occurrence of live births in a population. It is measured by the Crude Birth Rate (CBR) which is calculated by taking the total number of live births divided by the total population in a given year then multiplied by 1000 or 100.

In calculating fertility rate, it is expressed as;

$$\frac{\text{Birth in a year}}{\text{Population at mid-year}} \times 100$$

Tanzania has a high fertility rate when compared with other countries like Japan with a Total Fertility Rate (TFR) of 1.8

### b) Mortality (Death Rates)

You have just learnt about fertility (Birth rate) which cause an increase in population. What you are going to learn in this part is mortality (Death) Rate, this time a decreasing factor.

In the first place the word mortality means the occurrence of deaths in a population. It is the frequency or number of times deaths occur in a population. As in the CBR, the Crude Death Rate (CDR) measures the deaths or the frequencies of deaths in a population. It indicates the number of deaths per 1000 people.

In simple calculation this is expressed in the following formula:

$$\frac{\text{Total number of deaths}}{\text{Total mid - year population}} \times 100$$

Another important measure of mortality is the infant mortality rate which measures the number of deaths of infants under 1 year age per 1000 live births in a given year.

$$\frac{\text{Total number of deaths of infants 1 year}}{\text{Total number of live births in a year}} \times 100 \dots$$

Mortality is high in Tanzania. In the 1980 census the crude death rates was 13 per 1000 while infant mortality rate was 137 per 1000. Records from the Ministry of Health show that the main reason for out-patient attending hospitals and clinics was malaria. Another common measure of mortality is life expectancy or expectation of life at birth. This is an estimate of an average number of additional years a person can expect to live from a group. Usually, this measure is influenced by the distribution of death by age.



### **Natural Increase**

Dear learner, another thing that you should know when studying about the Birth Rate, Death Rate and Fertility is the natural increase. You have already been told that fertility increases population while mortality decreases it. The rate of Natural Increase is the difference between the Crude Birth Rate (CBR) and Crude Death Rates (CDR) divided by 10.

The rate of natural increase (RNI) for Africa is 3.0 which is higher than the world average of 1.7. Asia for example has 1.8, Latin America 1.9. Oceania 1.3, USSR 0.7. North America 0.7 and Europe 0.2. This means that the population of Africa is therefore growing at a higher rate than that of the other continents.

### **c) Migration**

Migration is the third factor, which should be considered in a population change. It is a population change factor because when people move from one place to another, they leave a gap at the place of origin and make an increase of the population at their destinations.

Migration in general is the movement of people from one place to another for the purpose of settlement or change of residence. The term out—migration and in-migration refer to movements within one country of residence. Thus, a person leaving his region and going to another region is an out-migrant in the region of origin and an in-migrant in the region of destination.

### **Activity 4**

The impact of migration on a region depends on the population size at risk in the particular region. For instance, there is a reasonable inter-regional migration in Tanzania, Dar es Salaam having the largest total number of net migrants. Rukwa region in-migrants and out-migrants seem to balance. Can you tell why this is so?

Now the term immigration and emigration refer to movements between countries. Someone leaving his country to settle in another country is called an emigrant and an immigrant in the country of destination that is where he is going.

In the local migration, that is migration within the country there are four directions of movements. These include:



- i) **Rural-rural migration:** Involves movement of people from areas which are short of adequate supply of suitable farmlands or pastures or water for pastoralists. Some of them work for wages in private farms, plantations or mines.
- ii) **Urban-urban migration:** People move from small or medium size to larger cities, which offer greater opportunities in terms of education and varieties of jobs. This is common in countries such as Nigeria where there are a large number of urban centres.
- iii) **Rural – Urban migration:** Involves movement of people from rural areas to urban areas expecting to get some jobs. This type of migration is common in Africa. In Tanzania it has led to young people flooding the Dar es Salaam city, where they are known as 'Machingas'
- iv) **Urban-rural migration:** Movements consist largely of people who are unable to find jobs in the city or returning to their place of origin on retirement. However, this is not a common practice.

Dear learner, coming back to our Tanzanian situation, what is the impact of immigration to our regions? Well, the impact of immigration in a region depends on the population size at risk in the particular region. This means if the out-going region that is, the region where one is moving from does not have many people, the impact of his movement away will be seen more. Usually, the population at risk is the non-migrant population.

In Tanzania there is a reasonable inter-regional migration. Starting with Dar es Salaam which is the centre of development in terms of industries and commerce, it has the largest number of net-migrants followed by Tabora which may be due to more land for settlement has also pulled more migrants. The same thing applies to Shinyanga, Kagera, and Morogoro. The leading out-migrant regions are Iringa, Mwanza, Coast and Mtwara.

### **Effects of Population Change**

Dear learner, Population changes have effect on both the individual and the nation at large;

- a) **Effects on the Individual**
  - i) The family is overwhelmed hence large family which as the results parents can fail to provide family basic needs.
  - ii) Loss of cultural values to some individuals migrate to urban hence immorality.
  - iii) Government may fail to provide services due to over-increasing of the population.



## b) **Effects on the Nation**

- i) When population grows in a country lead to increased poverty.
- ii) Overpopulation leads to unemployment, poor housing, poor health facilities, and high demand for food.
- iii) It is also a source of labour power when population is high.
- iv) Under population, cause uneven distribution of population, shortage of labour and underutilization of resources.
- v) Migration has an effect in the place of origin like shortage of labour, hence low production which results to shortage of food and cash crops.
- vi) Destination areas, immigrants increase population hence pressure on the available resources and spread of diseases.

## **Population Data and Policy**

Dear learner, welcome to the new section. This is about population data and policy. You will also know about the census, population policy in Tanzania, Nigeria and China.

### **Population Data and Its Presentation**

Dear learner, in this part you are going to study about population data and its presentations, and the census. Population data means information on population which is presented in numerical form, diagrams charts, graphs and maps. There are **two** sources of population data namely;

1. **Secondary source:** Include reports on population which is compiled and published. Data is obtained from text books, atlases, magazines, newspapers, journals, periodicals, research papers, internet and electronic media.
2. **Primary sources:** Are the first-hand data or data collected directly from the field. These data may be obtained through; Census, Vital registration, and Sample survey.
  - a) **The Census:** Is the official counting of the country's population. E.g., in Tanzania, it is normally done in an interval of every 10 years.

One of the primary sources of demographic data is a population census. Dear learner you can still remember what happened in our last census exercise. Where were you during that time? Did you participate in the counting people process? To add from what you know about census, let me tell you what census is, how, when and why it takes place.



**Census** is undertaken at regular intervals so that comparable information is made available in a fixed time and this is usually at an interval of about 10 years because they need a lot of time to prepare. Tanzania has conducted five (05) censuses since independence. These were in 1967, 1978, 1988 and 2002. The fifth one was conducted in 2012.

### **Importance of census**

With its scope on the size, distribution and characteristics of the population, censuses collect data on births, deaths, labour force, migration and housing. All this information is important as follows:

- i) Socio-economic planning of the country. For example, the data on death and birth rates is essential in establishing the rate of population growth.
- ii) They also enable one to know ages which more people die and average life expectancy for a population. Thus, they are essential in building of hospitals and other social related services like education, market etc.
- iii) The data on labour force is essential in establishing the labour force's size under employment or unemployment and the quality of labour.
- iv) Also, the data on housing tries to establish the quality of houses people live in. It examines whether they have good water supply, latrines, electricity etc.

### **b) Vital Registration**

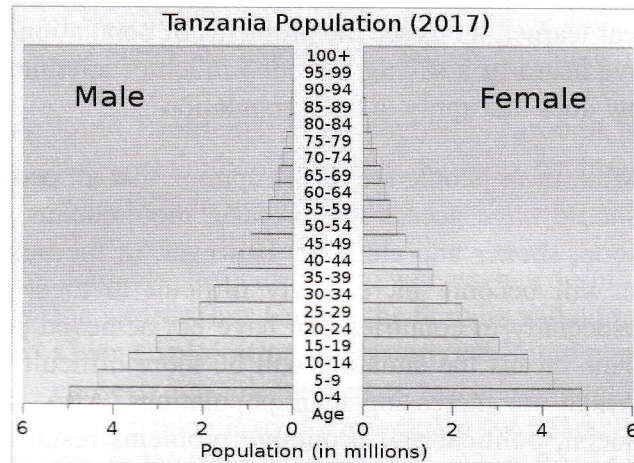
Is a way of collecting statistical information about population where by the occurrence of events is recorded as data for further use. The events include birth, death, marriage, divorce, and migration.

### **c) Sample Survey**

Involves selecting suitable representative size in the community to form population which provides information on death, birth, etc.

### **Interpretation of Population Data**

Dear learner, after data has been collected and analyzed in term of mean, densities, birth, death, sex ratio, etc. The population pyramid must be drawn to represent life expectancy, sex ratio, age group.



**Figure 1.4: A sample of Population Pyramid Representing Life Expectancy, Sex Ratio, Age Group**

#### **Uses of population Data**

- i) Population numbers and density enable the government to plan on how to locate resources e.g., roads, schools, hospital, police posts.
- ii) Organizations use the data from census for private business e.g. where to locate factories, shopping Centre or malls or banks.
- iii) Data on birth and death rates are helpful in planning medical services and health education especially where the death rates are very high so as to be controlled by providing health education.
- iv) Data on migration enable the government to plan on how to curb influx of people into urban areas from the rural regions.
- v) By knowing the number of dependents, the government is able to plan for schools, medical and other social amenities for children below 15 years and for elders above 65 years.
- vi) Likewise, by knowing the number of working age group would enable planning for creation of jobs.

#### **Population Problems**

In previous part you learned about population data and its presentation particularly in a form of census. Also, you saw what population change is. Factors like Birth rate, Death rate and Migration were discussed as major factors for population change. While Birth rate and immigration are population increase factors, death rates and emigration are population-decreasing factors.



### Activity 5

Dear learner, let us see the problems of population increase. You may have heard of a saying that “too much of anything is harmful” now how does this apply to over population?

Well, most people are of the opinion that all people in all countries should have access to the basic requirements of life, which are food, shelter and clothing. However, in the next century to come it will become increasingly difficult to meet these basic needs especially in countries that have not achieved population stability. This means the situation will be more difficult to those countries, which are increasing their populations. Also, it is likely that the social, political and economic problems resulting from continued population growth in these countries will affect other countries that have already achieved stabilized populations and high standards of life. So, population growth should be of concern to the entire world community.

Dear learner, in this first part we have just tried to give you a picture of what will happen when the population keeps on rising. We have also shown you how this population increase will affect almost all areas of our life. These results put the concern of the people and countries in finding ways and means of controlling birth rates. In the following part we shall learn the problems of population increase;

- i) **Land Degradation:** One result of over population is that land becomes degraded through deforestation, overgrazing and intensive agricultural practices.
- ii) **Pollution:** Pollution occurs when accumulation of waste materials exceeds the amount the environment can absorb. You have studied in the preceding units about air and water pollution and actually what happens. The increase on population causes an increase of disposal of sewage and waste, which can eventually cause diseases like cholera, typhoid, dysentery and diarrhea. As bathing and washing in water sources such as rivers, wells and lakes pollute the water, dumping and burning of waste at for example Tabata in Dar es Salaam and other residential areas pollute the air.
- iii) **Population Pressure:** Is the outcome of rapid population increase and this happens when available arable land can no longer adequately support the population which depends on it for its livelihood. Over population normally results in the deterioration of soil.



- 
- iv) **Extinction of Wildlife:** Many wild animal species are now disappearing due to increase in hunting and poaching. Examples are elephants and rhinos, which are hunted for their valuable tusks.
  - v) **Food Problems:** High population growth is the root cause of the world's food problems. In many countries in the world and especially in the developing countries people are dying because of hunger. There are now more mouths to feed than the food available. It becomes also worse when despite the big population the weather hits back to the farmers and no rain is received.
  - vi) **Over Exploitation of Resources:** Rapid population growth can cause renewable resources to be overexploited. For example, when fishing is over harvested to the point where fish population are so low that they cannot recover, then there will be too few fish to serve as food resource. These are the global population problems. They are problems that are faced by many countries including our country Tanzania.
  - vii) **Absence of Saving Investments:** In Tanzania particularly with a rapid population growth rate of 2.8 percent this fast population growth can be seen in the absence of saving investments and application of few societies.
  - viii) **Lack of Education:** Although the country had declared Universal Primary Education, due to high population growth not all school-aged children were enrolled. In some areas there were not enough buildings, desks and other teaching and learning facilities. In some others there were not enough teachers. In some areas children would not be reached. In fact, there were many problems about it. Similarly, it has been observed that despite the campaigns about literacy, still there is 9.6 percent of Tanzania population which is illiterate.
  - ix) **Unemployment:** In terms of employment both unemployment and underemployment are increasing. This problem is more seen in urban areas where unemployment joins the more slippery job in the informal sector.
  - x) **Poor Housing:** The rapid population growth in urban areas hinders the building of houses with water, electricity and sanitation for every family. In several urban areas more than 50 percent of the population is slum dwellers.
  - xi) **Lack of Sufficient Medical Facilities:** The rapid population growth has put a heavy strain on existing medical facilities. There is a growing deterioration of health services because of shortages of medicines, hospital beds, qualified medical personnel and



rising costs of medical care. This is true in most of our hospitals, whereby some patients' sleep on the floor in the hospital, one being told there are no medicines etc.

- xii) **Food Shortages:** The rapid population growth has outstripped food production leading to the incidences of hunger and malnutrition in some parts of Tanzania as well as the dependence upon food imports to supplement local production.
- xiii) **Migration Increase:** The neglect of rural areas where the majority of the population lives has increased the intensity of rural urban-migration especially of young people. A good example is the youth popularly known as the "Machinga" who have invaded all big towns in the country.
- xiv) **Urbanization:** The rapid and unplanned urbanization may lead to over urbanization, leading to more demand for urban amenities, transport, good roads, telephone, electricity, sewage and several problems related to socio-economic planning demands the need targeting demographic variables such as birth and death in the national planning systems.

#### **Possible Population Solutions**

- i) Efforts should be made to improve rural areas by providing basic socio-economic services and amenities.
- ii) Efforts should be made to improve the equipment of farming implements to enable people to remain in their settlement within rural set up.
- iii) There is a need to improve transport and other infrastructures in the rural areas to enable farmers to transport their products to the market.
- iv) Government should create job opportunities in rural and urban areas through establishment of industries, providing loans to people and education about entrepreneurship.
- v) Provision of education on family planning in order to curb birth rate and death rate.

#### **Analyzing Population Policies**

Dear learner, this part will tackle different population policies and relate such policies to population control strategies.

**Population policy** refers to the statement or set of statements in a form of laws or regulation rules enacted to attain some demographical goals. It aimed at putting more action and effort on favoring people to attain better life for the people.



Population policies are related to many things. They include the involvement of government in child bearing; laws determining the minimum age at which people may marry; factors may encourage people to have smaller families; availability of health and family planning services; education, primary health care, old age, security or incentives for smaller or larger family size. The tax structure including additional charges or allowances based on family size etc.

In recent years, the governments of many developing countries have recognized the need to limit population growth and have formulated policies designed to achieve this goal. The governments of most countries have also recognized the importance of educating people about basic maternal and child health. They also sponsor family planning projects, many of which are integrated with primary health care education, economic development and efforts to improve women status. A number of these projects are supported by the United Nations Fund for Population Activities (UNFPA).

Population control measures have therefore been instituted in many developing countries including our own country Tanzania. For that matter you will in this part study how Tanzania is going through about it. You will also learn more about the situation in other countries like Tanzania and Nigeria.

#### **Tanzania National Population Policy**

The population programme of 1970's focused on villagization aimed at free social services such as health, education and free supply of freshwater.

Also, literacy programme for Universal Primary Education (UPE) which was given free.

The Government of Tanzania has been concerned from the outset with the implications of population growth for the achievement of development goals. So, in 1980s various programmes to educate political and government leaders in relationship between population growth trend and national development were instituted. These included the 1980 National Population and Development Seminar in Arusha, seminars organized by UMATI in 1984 and 1985 for members of parliament and zonal workshops to discuss the census. Have you ever come across with this policy? Or read the document? If not please do that.



Donors such as UNFPA, USAID, and Pathfinder played an important role in facilitating the organization of these workshops and seminars by providing funds for population control.

The policy formulation process started in 1987 using the National Population Committee and co-coordinated by the Population Planning Unit. The achieved consensus led to the adoption by the Government of the National Population Policy in 1992.

The government on January 25<sup>th</sup>, 1992 adopted the National Population Policy (NPP). On July, 10<sup>th</sup> the policy was launched by the then Prime Minister and First Vice President Hon. J.S. Malecela in a special radio message delivered country wide as part of World Population Day Celebrations.

### **Goals and Objectives**

The National Population Policy has its principal objectives to reinforce national development through developing available resources in order to improve the quality of life of people. Its main goal in other words is to extend the horizon of the country's development plans whose principal objective is to move Tanzanians away from poverty and extend the horizon of standard of living. Since Tanzania became independent over 50 years ago, various issues pertaining to population have been dealt with; including censuses taking place after every ten years, and health programmes to reduce mortality rate in the country.

Other measures included efforts to reduce the rate of rural – urban migration especially in Dar es Salaam and measures taken to encourage people living in areas with problems of land scarcity to move to other areas in the country.

Development plans also deal with employment issues in the country. Since 1974 the Government in collaboration with other public and non-governmental institutions has been providing family planning services as part of maternal and child health services.

All these issues have been dealt without consideration of the impact of successes in these activities on population growth trends in the country. Although, for example, mortality rates in the country are still high compared to situations in other countries – particularly developed countries, progress made in spreading health services in the country has reduced mortality rates to an extent that the population growth rate has been increasing from 2 percent per year



in 1950s to about 3 percent in 1980s. As a result, the population in the country has increased from 23.1 million in 1988 to 34.5 million in 2002. Find out the population data of 2012.

This increase in population, together with the poor technology used by Tanzanians has had adverse impact on various sectors of the economy and the country's environment. Although the country's population density is still low, that is 26 people per square kilometer, settlements are spreading to agricultural marginal lands and the consumption of natural resources is increasing to the extent that threatens to turn our country into a desert.

This policy therefore gives our country guidelines for dealing with population issues in an integrated manner, and its implementation will give a new dimension and direction to development plans by making population issues the basis for the preparation of these plans.

The primary concerns of the population policy are therefore:

- i) To safeguard, as much as possible the satisfaction of the basic needs of the vulnerable groups in the population.
- ii) The development of human resource for current and future national socio-economic progress.

The following policy objectives take into account issues addressed to the international programmes of action.

- i) Integrating population concerns into development plans at all levels for sustainable development.
- ii) To increase the accessibility, availability, acceptability and affordability of basic health care services and facilities to all people. (Including sexual and reproductive health and rights).
- iii) To promote sustainable relationship between population, resources and environment.
- iv) To enhance scientific food production techniques, appropriate storage and efficient distribution.
- v) To improve the health and nutritional status of the population in particular women and children.
- vi) To promote a more harmonious relationship between rural, urban and regional development in order to achieve spatial distribution of the population conducive to the optimal utilization of the nation's resources.
- vii) To achieve universal access to retention and support for education, with particular priority being given to primary and technical education and job training, to combat illiteracy and to eliminate gender disparities in access to retention and support for education.



- viii) To increase the skills level of the general population to enable it participate in implementing the development programme to advise sustainable development.
- ix) To combat root cause of refugees movements in collaboration with international community.
- x) To develop policies and laws that better support the family, promote equality of opportunity for family members as well as contribute to its stability.
- xi) To achieve equality and equity based on harmonious partnership between men and women in the society.
- xii) To promote and strengthen proper children upbringing and growth including the retention of an environment that will allow optimal development of their various talents and discourage child abuse and other undesirable practices, including the discrimination of the girl child.
- xiii) To promote and strengthen proper youth development and to meet special needs of adolescents, especially young women.
- xiv) To enhance through appropriate mechanisms, the self-reliance of elderly people and to create conditions that promote quality of life such as health care, economic and social security in old age and enable them to work and live independently in their own communities as long as possible or as desired.
- xv) To develop social support system, both formal and informal, with a view to enhancing the ability of families to take care of elderly people with the family.
- xvi) To create, improve and develop necessary conditions that will ensure equal rights and opportunities for persons with disability and the valuing of their capabilities in the process of ensuring sustainable development.
- xvii) To address social and economic factors that act to the disadvantage of hunters and gatherers.

Dear learner, Population Policy is all about people in all ages that are from children to older people. It is also about the development of different areas in people's lives. Please read it over because it is quite long.

Now let us compare our population policy with other policies from other countries. Like Nigeria.

### **Nigeria Population Policy**

Nigeria is a country in the sub-Saharan region that has the most rapid population growth and highest population in African. In mid 1992 its population was estimated at 90.1 million people. Its total fertility



rate is 6.5 births per woman and it has great reproductive potential because 45 percent of the population is less than 15 years of age. The average life expectancy in Nigeria is 48.5 years which is low because of the high infant mortality rate.

The Nigerian government later recognized that its economic goals are more likely to be attained if its rate of population growth decreases. In 1986, Nigeria developed a national population policy in order to integrate population and development projects. Part of the plan involved;

- i) The policy seeks to reduce fertility to an average of 4 children per family.
- ii) Suggests an optimum marriage age of 18 years for women and 24 years for men, and advocates those pregnancies be restricted to the 18-35-year range and at intervals of 2 years.
- iii) Improving primary health care, including training nurses and other health care professionals.
- iv) Extending coverage of family planning services.
- v) Also, population education is being used to encourage later marriages.

Dear learner, from the two population policies, have you noted any similarities or differences? I hope you have seen some similarities. The first one is that in all the policies, the policy makers aim at making the lives of their people happier, secondly, they are concerned with the development of other respective countries and eventually the development of the people themselves.

---

## Unit Reflection



Think of the impacts which are likely to be experienced in your home village/town if there is either increase or decrease of a number of people.

---

## Unit Assignment



1. The population of Tanzania is dynamic and unevenly distributed. Explain why this is the case?
2. Describe the measures which have been adopted by the government of Tanzania to reduce the rate of rural – urban migration.



## Unit 2

### Classifying Settlements

#### Introduction

Dear learner, in the previous units of this module, which was about population you saw how man was sometimes moving from one area to another making some temporary or permanent settlement. You have even experienced it yourself whereby people whom you know just decide to move to a new home or settlement. Many of the reasons for such movements as you have learned in unit one is due to social, economic and environmental reasons.

Dear learner, in this unit you will learn about *settlement*. It is a subject that is related to population, that is, people and hence you may at times keep on reading back your notes in unit one.

#### Learning Outcomes



Upon completion of this unit, you will be able to:

- Describe types and characteristics of settlements,
- Analyse factors for growth of settlements,
- Explain the categories and functions of settlements and their importance,
- Discuss the socio-economic problems of urban growth and their solutions.

#### Concept and Types of Settlements

Dear learner, before we look at the different types of settlements let us see what a settlement itself means. Well, the history about how man has been living takes into consideration that humans are social species.

Throughout history, people lived together in groups, often linked by ties of kinship. The commonest human settlement is the village, a cluster of dwellings between 100 and 10,000 people often flanked by areas of cultivation and pasture. For example, in India in 1980 there were some 580,000 settlements of which 575,000 were rural settlements and 98% of these were villages with less than 5,000 inhabitants.

Dear learner, briefly, **settlement is any human habitation which may be rural or urban.** In simpler language it means a location



whereby people choose to make a living at that particular location. It is a community or group of homes. **By rural it means those settlements which are established in the villages, divisions, and other small settings.**

On the other hand, **urban settlements are settlements that are established in towns.** There are small towns, big towns and cities. Small towns are like Kibaha, Ujiji, Mahenge, and Newala. Big towns are like Morogoro, Iringa and Dodoma while cities are like Dar es Salaam, Mwanza, Arusha, Tanga, Nairobi, Kampala and Lusaka.



Take a map of Africa and identify some more examples of small towns, big towns and cities that form urban settlement Hence one or many homesteads make a settlement. Secondly there has to be a situation of the relationship between the settlement, resources and other nearby settled places. We can now start to look at different types of settlements and what they are composed of.

### Types of Settlement

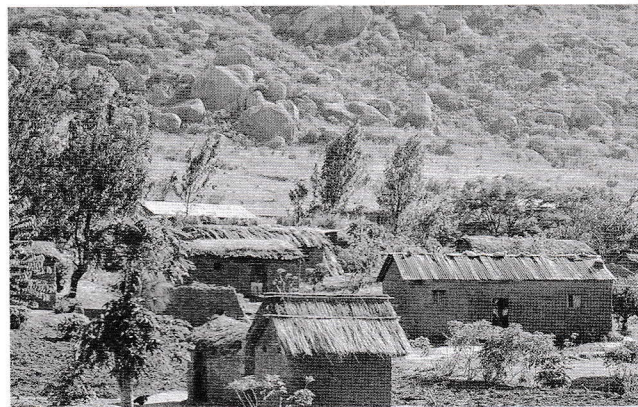
Dear learner, there are two types of settlement which are:

- i) Rural settlements
- ii) Urban settlements.

Since most of the population lives in the rural areas, let us first look at the rural settlements.

#### 1. Rural Settlements

Rural settlements are types of settlement with small population size and density where by people live in isolated homesteads, are places where people live in the villages and their activities are in the primary sector such as cultivation, fishing, mining, etc. The basic unit of rural settlement is home stead, the home stead includes people who are related and are common in a certain place.



*Figure 2.1: Rural Settlement*



### The Characteristics of Rural Settlement

Dear learner, there are different characteristics of rural settlement like: settlements belong to people who are farmers and peasants, the agriculture is the main economic activity of the rural areas, the population density is small, the settlement size is small, there is poor market system, there is poor social services, there is shortage of water supply, Present of pests and diseases, there is poor transport and communication system, there is inaccessibility of electricity supply, there is poor education system in rural area, lack of food supply in rural area.

In Africa for example, the rural areas are occupied by traditional societies which are tied to a single economy. In these areas we find three main different groups based on different types of economy. These are the hunters and food gatherers, pastoralists and agriculturalists. Dear learner there are different kinds of activities that people in rural Africa settlements do. There may be more activities like fishing, lumbering and so on; but these will be discussed more in the categories and functions of settlements.



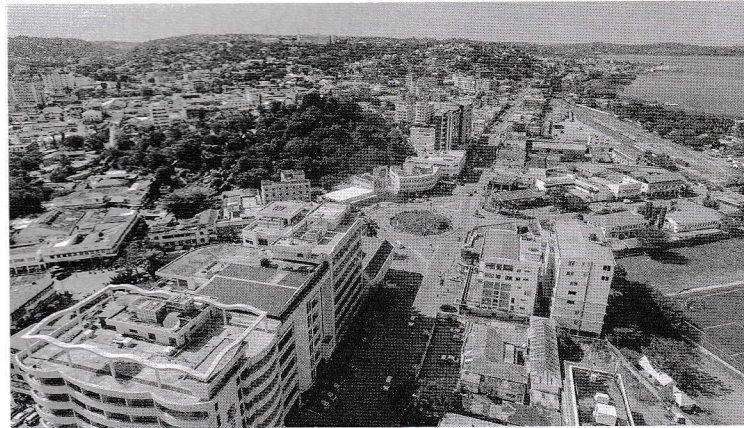
#### Activity 1

Walk around your area and try to observe if you can see types of settlements that you have learnt.

Dear learner, we have finished reading about one type of settlement, that is, the rural settlement. Now we are going to learn about the other type i.e. urban settlements.

### 2. Urban Settlements

Dear learner, the first thing you should note here are the two words, urban and settlement. Urban means towns, or cities. So, urban settlement is the types of settlement where by people are living in concentration areas. Urban settlement means settlements that are based in towns or cities. But if the same person lives in Mkuyuni, which is a division in Morogoro Rural District, we say he or she belongs to rural settlement. Urban settlements are centres of human settlement that derive their visible means of existence from secondary and tertiary occupation such as trade, manufacturing industries, government administration and the like.



*Figure 2.2: Urban Settlement*

### **Characteristics of Urban Settlements**

Dear learner, there are many characteristics of urban settlements, here are some of them;

- i) Availability of market system,
- ii) Availability of industrial development activities,
- iii) Availability of social services example hospital, school,
- iv) There is population increase,
- v) Presence of water supply,
- vi) Presence of electricity supply, and
- vii) Good transport and communication system.

The major functions of urban settlements are trade and commerce, transport and communication, mining and manufacturing, defense, administration and creational activities.

In other words, urban settlements are created through the process called urbanization, which is a process by which a section of settlement changes its occupation from an agricultural to non-agricultural activities. For example, a town is a geographical urban area which is larger and more regularly built – up than a village and which has a more independent form of local government. However, on the other hand types of settlements vary from one country to another and this can lead to problems in making comparisons between countries. Apart from types of settlement there are settlement patterns.

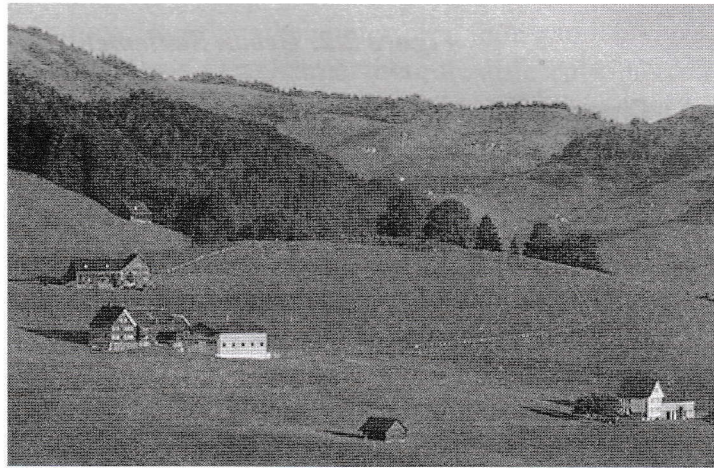


### Settlement Patterns

Dear learner, categories of settlements depend on the patterns of structures in relation to the population density. **Settlement pattern refers to the arrangement or layout of houses in a given area.** There are different types of settlement patterns (categories) which are:

#### i) **The Scattered or dispersed type of settlements**

The Scattered or dispersed types of settlements are the settlements where the houses are randomly spread out over an area, commonly found to the countryside where land is available. Most of the activities performed by them include cultivation, animal keeping, honey extraction, etc.



*Figure 2.3: Dispersed /scattered settlement*

Dear learner, see how the homesteads are dispersed. They are quite far from each other. Can you see the difference between the two settlement patterns, that is, the nucleated and dispersed settlements?

#### ii) **Nucleated Settlement Pattern**

Nucleated settlement pattern is also referred to as clustered settlement. Their arrangement of houses is concentrated in a group in a relatively small area. The population of dwellers is high, normally found in urban centers such as large towns and cities.

Figure 2.4. shows a nucleated settlement. You can see how homesteads are grouped together.



*Figure 2.4: Nucleated settlement*

iii) **Linear Settlement**

Linear settlement is the one in which houses are developed or built along the specific features such as rivers, railway or road. The lines or arrangement may be straight or curved depending on the nature of the feature along which house are built.



*Figure 2.5: Linear settlement*

**Functions of Settlement**

All settlements have certain activities/useful function to justify their existence. Such functions are;

- i) **Agriculture collective center:** Where farmers produce different agricultural crops and animals are marked as agriculture collective centers.



- ii) **Communication center:** Some of settlement functions as communication centers and they perform various communication activities.
- iii) **Residential function:** They are place where people live and share different values and culture activities.
- iv) **Administrative center:** These are center from which the surrounding areas are administered some of these centers can be district or regional center and local administration.
- v) **Commercial and market center:** These are place where business takes place. These centers are composed of shops, markets and means of transport and communication like roads and telephones facilities.
- vi) **Mining center:** They are settlements which have ground infertile mainly as a result of mining activities. These settlements are characterized by having mineral resources Example: Geita, Mwadui, and etc.
- vii) **Industrial settlement/Manufacturing Centre:** This kind of settlement is mainly formed in town/areas which grow rapidly with the establishment of industries and they normally have a certain advantage to the people living around as they provide employment and goods.
- viii) **Fishing centers:** The river sites like ports and ocean ports are important for fishing activities.
- ix) **Social function settlement:** They provide the health and educational facilities such as hospital, and clinic likewise the area can be places of entertainment and recreational center.
- x) **Royal center:** These are traditional residence of monarchies, kings, queens, sultans, and their consorts.
- xi) **Tourist centers:** These centers are mainly characterized by resort and around them there are many hotels mainly of holidays.

Dear learner, after reading about the types of settlements in section one, let us now look at the factors for the growth of such settlements. By the way do you remember what you studied in unit one about factors which influence population distribution?

### **Factors for the Growth of Settlements**

Dear learner, in this section you will look at the things or factors which have necessitated the growth of settlements. Next, you will study about socio-economic problems associated with urban growth. Lastly in this section you will learn about gender related issues with urban growth and ways of overcoming them. Let us see factors for the growth of settlements:



- i) **Availability of Natural Resources:** Availability of natural resources such as water, good soil and minerals attract people to go to such places and start settlements. People need water for domestic use, animal use and for growing different crops. They also need good soil for cultivation and mineral deposits for economic reasons as well as for employment. Even nowadays many places are being inhabited because of the good and fertile land for cultivation.



*Figure 2.6: Area that have mineral deposit*

Do not forget many new areas in our country that are now being discovered to have rich deposits of minerals like gold and other precious gem stones. Whenever people hear of such places immediately, they rush to them and start temporary or permanent settlements.



Please read unit one where the effect of availability of natural resources has been very well explained.

- ii) **Trade:** Trade attracts people to meet at certain places for exchanging of goods. Such places expand into large settlements or townships. Examples of such places are Namanga, Tunduma and many more other small areas you can think of.



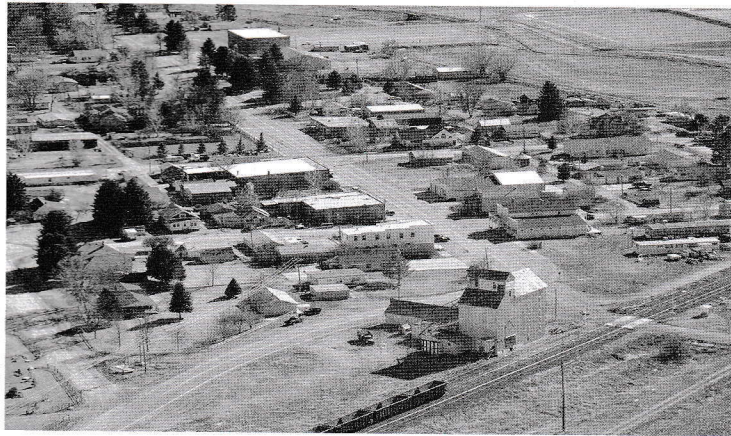
*Figure 2.7: Trade*

iii) **Industrial development**

Industrial development gives rise to towns. The areas of intensive cultivation of industrial crops like the Nigerian cocoa belt, the Senegal groundnut belt, the Uganda Cotton Belt and the Kano groundnut belt attract emigrants from other areas who seek employment in the established processing industries in these areas.

iv) **Transport**

Railways, roads, air and water transport often encourages the growth of settlements. These settlements may grow at roads junction or coastal areas. Examples of such places are Dar es Salaam, Morogoro, Dodoma, Tabora, Mwanza and Kigoma. These have been very much influenced by the railways roads, air and water transport. Makambako in Iringa region is also a good example of a small township where settlements have grown due to road influence. This small township is at the junction of Dar es Salaam - Mbeya and Dar es Salaam – Songea roads.



*Figure 2.8: Transport*

v) **Administrative Centre**

The first half of the nineteenth century experienced an accelerated growth of new towns and expansion of already established ones. The colonial powers founded new settlements and developed them to serve as administrative centres, market, mining centres, roads and railway junctions and ports. Towns which grew as capitals for the colonial administration include Nairobi, Dar es Salaam, Harare, Abidjan, Kinshasa, Younde, Maputo and Cape Town.

Other centres such as Beira, Takoradi, Lobito and Durban were associated with transport of minerals and crops for export while Tabora, Bulawayo and Khartoum developed at road and railway junctions.



*Figure 2.9: Administrative Centre*

**vi) Economical and Political factors**

The post-colonial period was characterized by expansion of existing towns. The expansion of existing urban centres was due to political and economic factors. In some countries like Kenya and Nigeria it was a response to political decisions aimed at encouraging national integration by upgrading the status of many small urban centres. Some countries chose more centrally located towns and developed them into new capital cities for example, Dodoma in Tanzania, Lilongwe in Malawi and Abuja in Nigeria.

The rapid growth in the major cities during the post-colonial period was due to growth of industries infrastructure facilities and other amenities which attracted people from other small urban centres and rural areas.

**vii) Rural – Urban Migration**

Another factor is the rural – urban migration.

Dear learner, again read your notes in unit one about factors which influence population distribution.

**Activity 1**

Dear learner, before going further, think of possible factors that have influenced the growth of urban centre in your area.

**Socio-Economic Problems Associated with Urban Growth**

Dear learner, you have learnt different factors that cause the establishment of settlements including their growth. But don't forget that the activities of these dwellers are also changing.

So, during the process of urbanization, that is, the process by which a section of settlement changes its occupation from agricultural to non-agricultural activity and particularly focusing on rapid population growth, the rural-urban migration has social-economic problems.

In general, cities are a sign of development of any country. An increase of cities in a country means increase in trade, industries and so many developmental activities. Cities generate and accumulate wealth, and are the main centres for education, new jobs, innovation, culture and greater economic opportunity. However, the continuous flow of immigrants into cities and the resulting urban growth pose many economic, social and physical problems like;



### i) **Consumers of Natural Resources**

Despite the good things about cities, they are immense consumers of natural resources. They carelessly handle and sterilize land. Cities require big quantities of water, energy, foodstuffs and raw materials. Hence, they generate wastes, which contaminate and pollute water, air and soil far beyond their boundaries. Thus, many rural environmental problems are linked to urban demands.

### ii) **Transport Systems**

The anatomy of a city is fundamental to its functioning. In other words, this means that the basis on how a city works depends on its structure. Transport systems link the various quarters and join city to city or town to town. Their smooth working is essential if goods are to be moved and people to travel efficiently. It is true that people in urban areas or cities need good and sufficient transport systems due to their many activities which rely much on these transport systems. Unfortunately, all the major cities were laid out before motor vehicles became common and their road systems are often inadequate for present needs. In fact, many cities are grinding to halt because of urban congestion while noise and pollution endanger health and erode the quality of life.

### iii) **Air Pollution**

Air pollution is particularly bad in the city because of the factories and high densities of transport because of their high traffic densities, low traffic speeds, and the trapping pollution between high buildings.

### iv) **Poverty and Environmental Degradation**

You have earlier been told about cities being centres for all developmental activities. However, despite cities being centre of industry and commerce, many of them display extreme poverty and environmental degradation. For example, the beggars who are seen along major roads and streets within the cities. Also, poor housing is another sign of poverty. As far as environmental degradation is concerned, most cities have no proper areas for waste dumping or sometimes the collection of waste itself is poor resulting into unpleasant smell and serious health hazards.

In high-income countries, as older industrial towns decline and inner-city district decay, the educated, the poor and the elders, find themselves trapped and sometimes homeless in place where services are disappearing and crime rates are high.



In lower-income countries like Tanzania or less in developing countries, the proportion of urban inhabitants suffering from poverty and environment degradation is much greater than in higher income countries. However, the reasons for this difference are social, economic, political and cultural reasons.

v) **Water**

The availability of water for domestic and industrial use has been one of the main problems of the cities. As a result, water requirements of the modern cities have put a heavy strain on the available resources.

vi) **Waste Disposal**

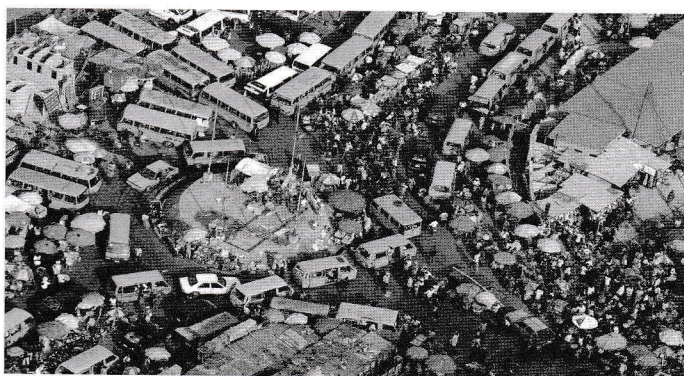
Closely linked to water supply is the problem of sewage and waste disposal. Look at water that surrounds houses especially during rainy season. Some more water runs through streets forming small rivers and making a lot of inconveniences to the people. All this is due to poor or having no sewage system. The present open dumping of garbage and other wastes on the outskirts of the town like Tabata area in Dar es Salaam and other towns and municipals constitute a health menace. They are a cause for diseases like cholera and diarrhea.



*Figure 2.10: Waste Disposal*

vii) **Housing and Shanty Town**

Urbanization is most closely related to housing problems since the population movement means the abandonment of dwellings in one area with demand and overcrowding in the other. Attempts to meet this demand both by the private and public sectors have been unsuccessful.



*Figure 2.11: Housing and shanty town*

Rural migrants to the towns have brought with them their skill at constructing quickly and cheaply one room houses without any amenities which quickly deteriorate into unhealthy slums. Yes, many of these houses can be seen in most cities and towns of our country.

The development of housing programs in the region has not succeeded in checking the growth of slum areas within certain pockets of the cities.

#### **viii) Land Speculation**

Dear learner, many times, you have heard of the Minister for Land and Housing talking about land. You have also heard about two or more people being allocated the same plot for building thus causing a dispute between them. You may as well have heard about people fighting for land. All this is about land speculation.

The real estate business or real estate craze as it has been called has dominated the economic scene in the region. Traffic in land and building, mostly, urban for quick speculation profit, has been the major direction in which economic vitality of the speculators have been channeled.

Population influx resulting from both the rural/urban migration and from the refugee's influx has put large masses of population land speculation.

What about migration itself, do you think is also a socio-economic problem?



### ix) Migration

Dear learner, hope you still remember what you learned in unit one about factors that cause population increase, migration being one of them. Lack of effective policies for sustainable development of rural economies force young people to abandon the countryside and move to the city and other big towns. Good examples are the youths popularly known as the “Machingas” who have abandoned their villages and moved to most big towns of Tanzania. As a result, water supply, sanitation, garbage collection and access to health care are grossly inadequate.

Dear learner, please read again unit one about these socio-economic problems that are brought about by the increasing urban dwellers. Visit any urban Centre around your area to identify these problems that we have discussed. This will give you more knowledge on this.



### Activity 2

Dear learner, please take time at your place and observe the work done by women. Let us now look at the special groups in a society that is women and children. What about them? How do the problems of fast urbanization adversely affect them? Women, children, the youth, the elderly and disabled are important groups in the society which need special programs to develop them in order to participate fully in socio-economic development.

Women in particular form an important part in the society in the country's effort to bring about its socio-economic development. Furthermore, in many families the economic contribution of women is very significant in raising families' incomes. For example, they engage themselves in farming and growing of different food and cash crops all for the benefit of the family.



### Activity 3

Dear learner, please take time at your place and observe the work done by women. They do so by carrying the burden of more responsibilities than men. Women in the villages do all the shamba works as well as all other household activities. Similarly, in urban areas women work in various places, such as offices, factories, small business as well as caring for the family. Despite those women still are the ones with low and humble status in the society which is basically an outcome of socio-economic systems which discriminate and oppress them on the basis of gender.

As a result, women and children in particular face the following problems as a result of fast growth of urbanization.

#### i) **Sexual Harassment and Rape**

You have already been told about what happens in the process of urbanisation, that is, the changing of occupation from agricultural to non-agricultural activity and particularly focusing on rapid population growth. During urbanisation more and more people migrate to urban areas, with a hope of getting white-collar jobs that is, jobs from either offices or factories. And because there are more people than jobs unemployment now occurs. Women end up being sexually harassed and even raped in the process of looking for employment. This underlines the subordinate place of woman within the exploited labour force and defines women as sexual objects rather than being producers. The threat of sexual harassment or rape is extremely powerful in controlling women's movements and even defining what kind of work they are 'safe' to do.

#### ii) **Prostitution**

Many young women and girls turn to be prostitutes because of economic reasons. The fact that more areas become urbanized, more people also flock to those areas in search for employment and other amenities. So, once they fail to secure an employment woman decide to become "commercial sex workers". So, the faster the urban areas grow, more women also engage themselves in prostitution, the thing that exposes them to different sexually transmitted diseases which endanger their lives.

#### iii) **Rejection of 'Patriarchal' Marriage**

Another problem of fast urbanization which affects women and children is the rejection of patriarchal marriages by urban women. A growing proportion of urban women are single and have never



married or else have married and are now divorced. Other case studies have shown that many female factory workers and urban petty traders are female heads of households with children of their own and other dependents. Some women divorcees have completely rejected the patriarchal form of marriage.

#### iv) **Street Children**

An increase in the number of street children is another effect of fast urbanization. The increase in population in both rural and urban areas bring a lot of economic inconveniences, which result into marriage break up. Most of these children run to big towns and cities where they also find life to be difficult. Hence, they become exposed to alcohol, drug abuse and other sexual harassment.

Dear learner, definitely, you can think of many more problems yourself. Take an example of your own town. I am sure it has grown bigger. What do you see are the problems facing women and children as your town becomes more and more urbanized? Hope you have understood, socio-economic problems associated with urban growth. Let us now continue to look in general the ways of overcoming problems associated with urban growth.

#### **Ways of Overcoming Problems Associated With Urban Growth**

The process of urbanization in regard to the rapid population growth has caused socio-economic problems, poor sanitation, environmental degradation, poor housing, unemployment and inadequate provision of social service.

These problems are more caused by the failures of the government at all levels. The failures of governments are not merely administrative however in many cases. Look at the following;

- i) They reflect historical and political influences. Much urban growth has outstripped the capabilities of municipal governments because national governments do not give them enough authority to raise revenues and manage their offices. For example, municipal and city councils should be left to the respective councils and let them use it for their development of townships, municipality and city councils.
- ii) Governments structures remain centralized, but because each city is unique, its management and development decisions should reflect a high degree of local involvement. This means that the local people should be involved in as much as possible



in development decision making. For example, in solving the problem of illegal urban settlement municipal administration should give people secure titles to land and progressive access to basic services provided by public authorities.

Thus, a successful strategy for dealing with illegal urban settlement is to:

- i) Legalize them, arrange fair compensation for owners.
- ii) Accept the inhabitant's way of building.
- iii) Provide water supply, sanitation, roads and any other basic infrastructure and community facilities. This often motivates people to improve their own homes.
- iv) Identify barefoot architects, individuals with get-up-and go in the community, to organize maintenance, help install water, electricity service lines and so on. A good example of such illegal settlements is the Jangwani area in Dar-es Salaam and some other outskirts of the city. In fact, there are many illegal settlements in most towns, which have resulted due to increase in population.
- v) The government to build low-cost houses, which should be sold to the people on loan basis. A good example is the National Housing Corporation, which in 1960s built a number of houses throughout the country. Those houses really helped in solving the housing problem.
- vi) As for transportation, developing an efficient and sustainable urban transport policy can solve this problem. That will help to reduce congestion, pollution and excessive use of energy.

**In order to give the people better transport management, municipal or city authorities should:**

- i) Encourage a switch to public transport by providing swift, safe, clean and sufficient service based on what people need. Reduce price fares to promote use of this transport, especially for the elderly and the lower income groups. A good example are the students and children in Dar es Salaam and other big towns where their city or town bus fare is relatively lower than that of adults; and
- ii) Speed bus should be introduced by providing separate lanes and also help cyclists by giving them separate, safe routes. Yes, this is true even in Dar es Salaam, look at the Morogoro road, Nelson Mandela Road, Nyerere road, Ali Hassan Mwinyi road just to mention a few, the cyclists and other pedestrians have a separate lane.



## The Problems Facing Settlements

### a) Rural-Urban Migration

In unit one while you were studying about population, you learned that migration is one of the factors, which influence the population structure. You were told that during the process people move from one place to another for the purpose of settlement or change of residence. By the way you studied about four kinds of migration, that is rural to rural, rural to urban, urban to rural and urban to urban, but in this particular case we shall concentrate on the major one which is rural-urban migration. These migrants who mostly are young people move to urban areas in search for non-agricultural employment, entertainment and other fancy things.

These people therefore, create a shortage of manpower in rural areas where they come from and an excessive manpower in urban areas where they have moved to.

Yes, as more and more people migrate to urban settlements the result is an excessive manpower which consequently causes unemployment. This means that there is now more people than the available working places. The urban population outpaces the growth of their respective urban economies thus creating serious unemployment and shortage of housing and other public services, water, electricity, medical facilities etc.

The housing problems are reflected by the poor quality of most of the houses especially in low-income residential areas for example, Manzese in Dar es Salaam.

### b) Social Disorders

Another problem facing settlement is social disorders. Social disorders are both in rural and urban settlements although they look more serious in urban settlements. In urban settlements for example, the inability of towns and cities to employ the large influx migrants leads to an increase in urban poverty which subsequently leads to such problems as juvenile delinquency, crime and a general level of insecurity. Young men or youths engage in alcohol drinking, use of drugs, breaking and stealing from the houses, fighting, pick pocketing, rape and other sexual abuse activities. Young women also fall into prostitution as a last means for survival.



### c) **Lack of Spaces or Pressure on Land**

Lack of spaces is another problem of settlements and particularly in the unplanned settlements. Due to the urban settlements houses become overcrowded and open spaces for children's play grounds and other school premises are invaded for housing construction. The result is a concentration of houses with no enough air, poor environment and lack of drainage and waste disposal areas.

Dear learner, you may have seen this yourself in most areas where the roofs of different houses are almost on top of each other. Now, suppose fire caught one of the houses, what would happen to the rest of the houses? Definitely, no house would be spared!

### d) **Environmental Degradation**

Environmental degradation refers to the process which tends to wear down the land surface and the environment in general. The word degradation means the lowering of the quality of something. When the environment in general loses its cleanliness due to addition of pollutants, which causes pollution, it is said to be degrading.

Environmental degradation is another problem facing settlements both in rural and urban areas. High demands for basic public facilities for example clean water, waste disposal tins and dumps, poor drainage and sewage systems, toilets, and others which lead to general environmental degradation and poor living conditions of the people.

Dear learner you have seen the problem of settlement. Can you think of how these problems can be solved?

### **Ways of Solving Problems Facing Settlements**

Since rural-urban migration and social disordering are done by mainly young people:

- a) Measures should be taken to moderate the flow of rural migrants to urban areas through special programmes for youths in rural areas. This will keep them busy in the rural areas without thinking about running to the towns. The problem of social disorder, crime, insecurity is due to lack of productive activities.
- b) Emphasis on vocational and technical education as well as on skills formation programmes outside the educational system, should be tailored to the needs of the labour market, self-employment and income generating activities. For example, if the youths are taught some carpentry skills, they should be aware



of where to sell their products so that it becomes an income generating activity. Chairs, table, beds and cupboards should have a place for sale.

- c) The question of young people running to towns and cities for the aim of following entertainments and other amenities could be solved by introducing the same things in rural areas. Different games, better shops, good roads are few examples of things which could make rural area as exciting as urban areas.
- d) In order to restore peace and order, measures should be taken to involve all members of the society. For example, in Dar es Salaam and some other towns and even in some rural areas the so called “Sungusungu” was introduced. This was a night guard carried by different people at their areas. The aim of “sungusungu” has been of safeguarding people’s lives and their properties. Thanks also the Ministry of Home Affairs for putting up Police Posts almost at every place in towns. This has greatly reduced crime.

The questions of unemployment, housing and other social services are just a consequence of mainly rural-urban migration. So rural-urban migration is a core problem which once solved other problems related to it will also be solved.

- e) **The Problem about Lack of Space:** It is true; there is high congestion per house and even per room in most settlements especially in urban areas often as a result of the cultural obligation of people to accommodate their families, relatives and friends. So, one way of solving such problems is to have a settlement properly planned. This will allow adequate waste disposal and provision of other basic facilities.

f) **The Problem of Environmental Degradation**

Environmental degradation leads to wide spread poverty, urban overcrowding, overgrazing, shrinkage of tenable land and desertification. Therefore, resource channeling must be directed to address poverty flatted environment problems.

- i) It must aim at eradicating communicable diseases like cholera, malaria, typhoid and diarrhea.
- ii) It must also guarantee food, shelter, safe water for all sustainable energy supply, employment and income generation in rural and urban settlements.



Tanzania for example is using various efforts to conserve the environment like the establishment of a ministry responsible for the environment and the National Environment Council. There are also a number of conservations programs going on like the conservation programmes in Dodoma Region (HADO), Shinyanga Region (HASHI), Iringa Region (HIMA) and Tanga Region (SECAP).

The increased settlement has put much pressure on available natural resources such as land, forests, grasslands and water. People's needs for agriculture, pastorals and for fuel wood and timber wood for construction have had to deforestation, land degradation, desertification and failing of agricultural output. Therefore, people in both urban and rural settlements should be given environmental education since this knowledge about environment is the first thing needed for a better understanding, protection and improvement of the environment and settlement at large. Well, hope this is quite clear to you.

Dear learner, you have seen several measures to be taken in order to avoid environmental degradation. Now what other ways do you think can be used in your area to solve environmental degradation? Lastly let us look at ways of solving the problem of flight of labour from rural areas.

Labour is equally needed in rural areas as it is needed in urban areas. However, in rural areas it is needed in order to maintain the level of production of different agricultural products necessary for their development.

---

## Unit Reflection



You have come to the end of this unit and you have learnt a lot about settlement. What can you say about the type of settlement in your area in terms of characteristics, factors and problems?

---

## Unit Assignment



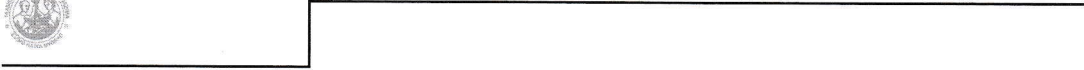
1. My visit to Dar es Salaam leads me into curiosity. There are so many people compared to my homeland Singida. In six points help me to know why.
2. The major problem facing settlement today is rural urban migration. In area where you live do you experience that problem and why do people move from rural to urban areas?
3. Suggest the possible solutions for problems facing settlements.



---

## References

- Kibuuka, P. & Mzezele, S. (2011). *Geography in Focus Form 4* Oxford University Press (T) Ltd: Dar es Salaam.
- Kimei, M. (2006). *School Certificate Geography 4*, East Africa Educational Publishers Ltd, Nairobi.
- Kipagile, C. A & Faustine, E. J. (2014). *Fundamentals of Geography Form Three Student's Book*, Long Horn Publisher: Dar es Salaam.
- Msabila, D. T. & Lugino, K. J. (2008). *Comprehensive Geography for Secondary Schools Book Three*, Nyamabari Nyangwine Publishers: Dar es Salaam.
- TIE (2016). *Geography for Secondary School Form Three*, TIE: Dar es Salaam.
- Urasa, A. & Mafiga, Y. R. K. (2010). *School Certificate Geography 3*, Ujuzi Books Ltd, Dar es Salaam.
- White, R. (1998). *African in Focus, A physical Human and Economic Geography*, Mac Millan Education Publishers Limited, Malaysia.



Institute of Adult Education

P.O. Box 20679,

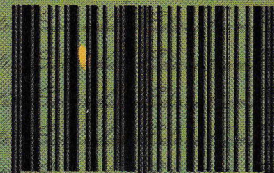
Dar es Salaam

Tel: +255 22 2150836

E-mail: [info@iae.ac.tz](mailto:info@iae.ac.tz),

Website: [www.iae.ac.tz](http://www.iae.ac.tz)

ISBN 978-9976-88-158-5



9 789976 881585